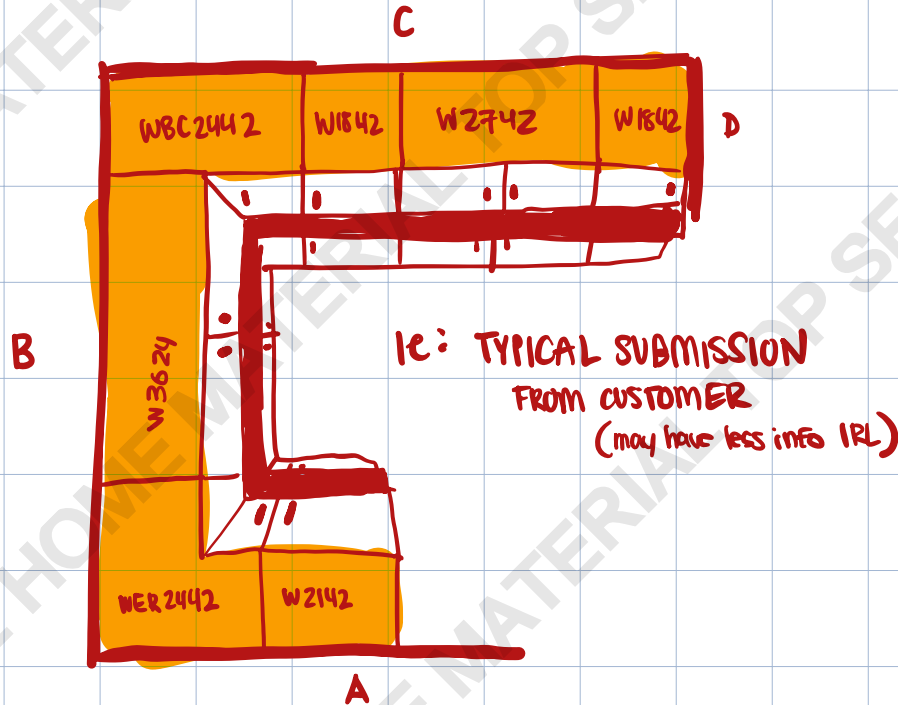


# Design Guide



★ **Design Guide (In-Progress)**: This will be a Printable PDF we can provide to customers in order to fulfill their request

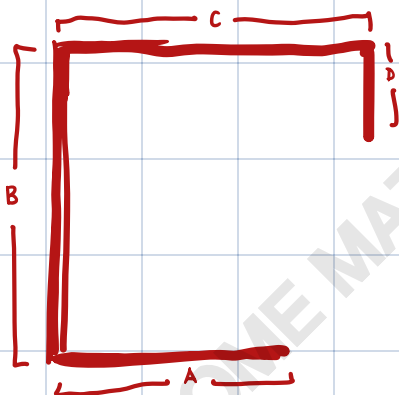
★ **For Now**: Review the measurements or the drawing the customer has provided you. **DO we have it all?**

- All wall measurements
- All Appliance centers (example below)
- All opening measurements (windows, doors, walkways)
- Cabinet / Countertop style (if applicable)
- List of any preferences

★ **Confirming Wall Measurements = without one, we can't complete the design**

or we have to warn the customer that all measurements must be verified before proceeding with their design/order. We don't want to be mid-way through an install and realize you were off 3" and now can't fit and can't return or exchange since it's assembled or special order (if applicable)

- Customers MOST provide or measure all walls in the space they're going to remodel
- WALL-TO-WALL
- should give you ceiling heights as well (gives us an idea of what can fit if they're unsure)



$$A = 68\frac{1}{4}''$$

$$B = 102''$$

$$C = 127\frac{5}{8}''$$

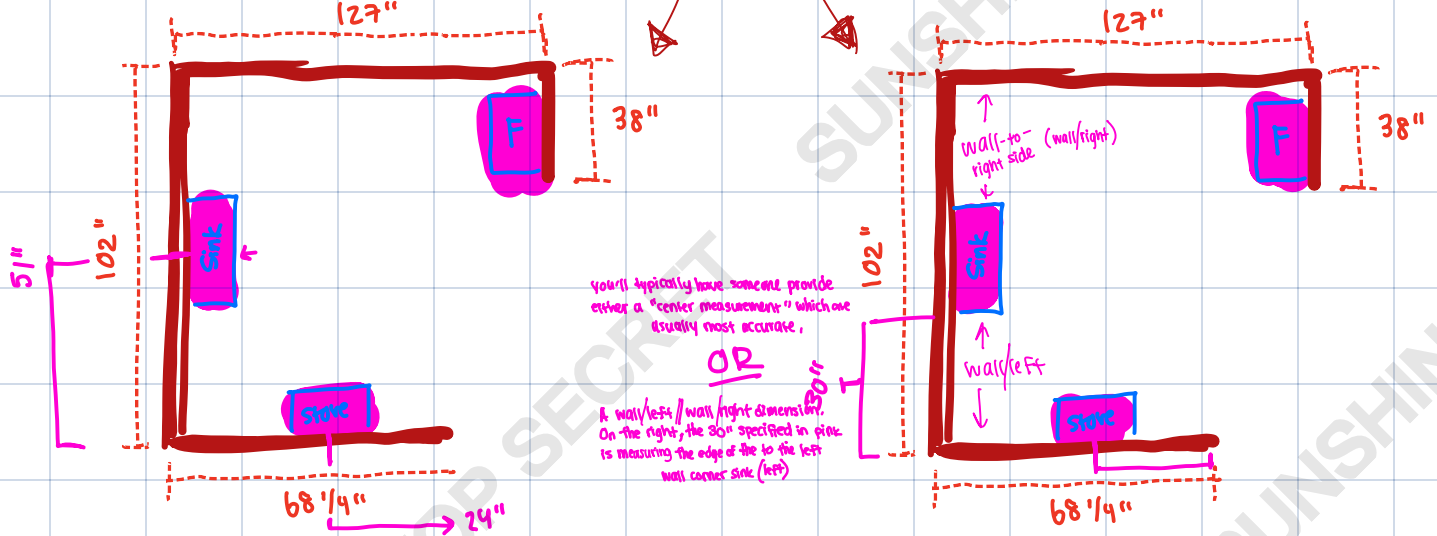
$$D = 38''$$

$$\text{Ceiling height} = 10\text{ft}$$

!!!  
DO NOT PROCEED  
IF CUSTOMER DOESN'T  
HAVE WALL MEASUREMENTS  
NO, WE CAN'T MEASURE  
THEIR HOME, ONLY  
CONTRACTORS

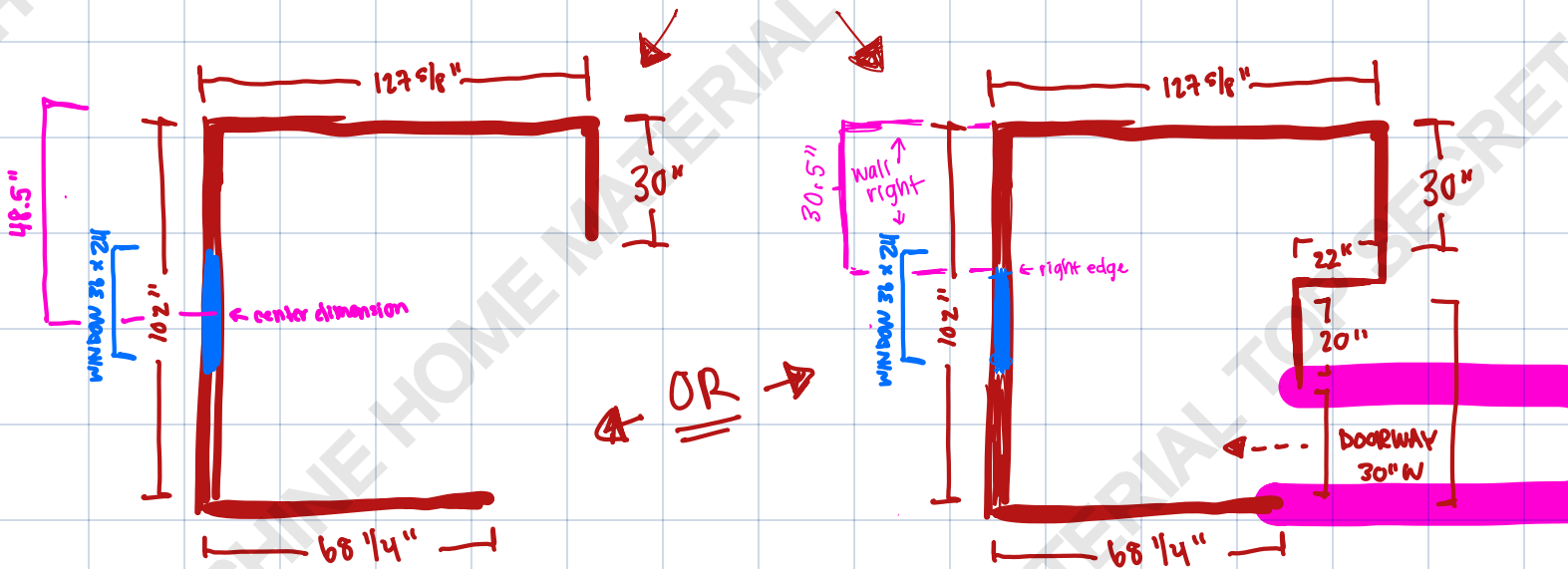
★ **Appliances** - Vaguely includes SINKS, REFRIGERATORS, DISHWASHERS, STOVES/COOKTOPS + ETC

- it's crucial we get the center dimensions of appliances as generally, the center is where we'll see plumbing or electrical that would normally get in the way of cabinets or could possibly skew the accuracy of the design.
- For Sinks + ranges, we cannot proceed with the design until we AT LEAST have the center dimensions of these items
- Some appliances have a "standard" or "commonly found" size. This helps OUR TEAM make educated guesses to assist in the design process, but we should always remind the customer to verify the measurements since we are not contractors.
  - SINKS = 33"W, 30"W, or 27"W are most common (the sink). Add 3" to find the base needed (works in most cases)
  - Dishwashers (DW) = 24"W x 34.5"H x 24"D (width most common)
  - Stove / Range = 30"W x 34.5"H x 24"D (width most common)
  - Refrigerator (F or R) = 36"W x 70"H x 27"D (width most common)



## ★ Opening Measurements - windows, doorways, hallways, etc (can open + not part of wall)

- If the customer mentions there are no openings, skip the rest :)
  - Windows
    - center dimension (seen below) : REQUIRED
    - window dimension (seen below) : REQUIRED
  - Doorways - only matter if installing cabinets on same wall
    - width + height specified
    - center // edge dimension to wall right/wall left
      - \* It only needs to be specified and added to the design if cabinets are near and on same wall. We won't need to know if out of area \*



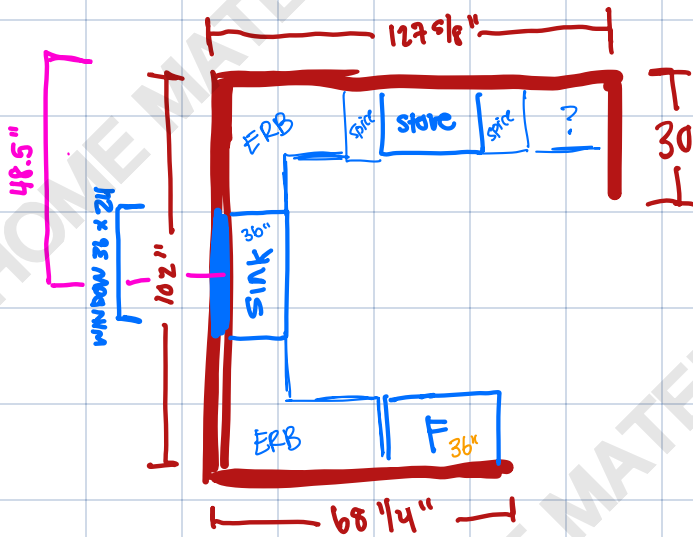
## ★ Cabinet style - was it specified?

- it's easy to forget
- If in person, make sure to always ask the right questions to get the info you need. Try not to start w/o knowing.
- If online and nothing is specified, follow-up or default to Shaker White
  - this can be changed later if something changes.

## ★ Preferences // MISC - last lap!

- By this point, you should have everything you need to begin the design on 2020. The last thing to ask (FOR YOUR SAKE) the customer is if they had any models or ideas of what they want for the space.
  - This could save you a lot of thinking!
  - Be sure to add everything to the notes or drawing
- Questions that help to ask:
  - "Do you have any ideas for the design?"
  - "Drawerboxes or standard (door + drawer)?"
  - "Are we centering the sink to the window?"
  - "Is there a dishwasher or any other appliance?"
  - "How big is your fridge?"
  - What do you have in mind?
  - Do you like lazy susans or blind cabinets?
  - Are you putting a microwave or hood?
    - Needs cabinet
    - NO CABINET NORMALLY

• If all info is received, your notes / drawing should look like the following pic



### Notes:

- Ceiling height = 10ft
- 42" ft uppers
- White Shaker Cabinets
- Installing micro on top of stove
- NO DISHWASHER
- Looking to fit spicetracks next to stove
- wants lazy susans (ERB)
- Sink is centered to the window

### Customer information:

NAME: SUSAN S.  
EMAIL: SUSAN@SUNSHINE.COM

↑ sounds silly, but don't forget!

\* You can use Math to make educated guesses of what will fit in the wall even before entering everything in the design program

ex.) Wall = 100", customer wants these items on the wall for sure:

ERB 36" - 26"W  
SB 36" - 36"W  
100 - 36 = 64  
64 - 36 = 28

We don't carry anything 28" but we do have 27"W (standard only). Assuming this is not against a wall (you'd need filler), a B27 would fit!!!

Proceed to the next part IF you have everything noted above :)

### Remember:

- We help customers in-person, online, and over the phone. It can be a lot!
- If we are getting slammed with any of the above, stop what you're doing and catchup!
  - This is why we generally tell people that we can have designs completed as fast as the same day or typically the following (in case it gets busy!)
  - Try NOT to delay the design too much unless we explained to the customer prior that we wouldn't be able to begin until a specific day.